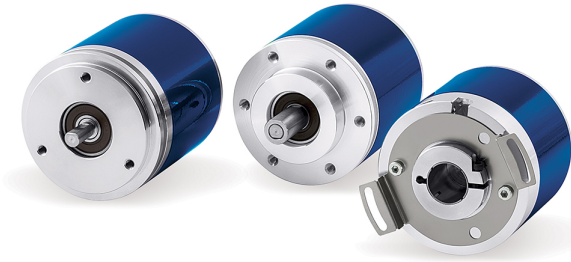


AMT58



95B081060

AMT58-S06-13x12-M12
SSI® MULTI-TURN LINE

OVERVIEW

- Standard dimension Ø58mm
- Hollow or solid shaft
- Very high resolution
- Very high accuracy

TECHNICAL FEATURES

Detection properties

Nominal sensing distance	8192 cpr x 4096 turns
--------------------------	-----------------------

Sensitivity adjustment	n/a
------------------------	-----

Application

Description	Shaft Ø6mm
-------------	------------

Functions	Absolute multiturn
-----------	--------------------

Outputs

Output type	Gray SSI RS422
-------------	----------------

Response time	n/a
---------------	-----

Electrical data

Operating Voltage	7.5-34 VDC
-------------------	------------

Emission	n/a
----------	-----

Mechanical data

Dimensions	Ø58x52
------------	--------

Connections	M12
-------------	-----

Material	Metal - Aluminium
----------	-------------------

Generical Data

Dimensions	Ø58x52
------------	--------

Datasensing S.r.l.

Strada S.Caterina, 235
41122 Modena (MO)
Tel. 059 420411
Fax 059 253973
E-mail
info@datasensing.com

**date of
printing**
13/06/2025
05:25:08