



CF

AF/ER9

Access,Opt.fibre,Focal. CF/RB3,E+R,90°
PLASTIC OPTICAL FIBRES

OVERVIEW

- Wide range of models: ultra slim for small object, long distances, spiral tube for handling
- Wide range of flexible fibre heads (with sleeve)
- Wide range of cutting fibre units
- P67 protection degree
- SSF – FS1 – FX3 – FX4 series connectable
- Approvals: CE



TECHNICAL FEATURES

Detection properties

Distance with SSF	120 mm
Distance with FS1	120 mm
Distance with FX3	700 mm
Distance with FX4	700 mm
Distance with FIR	400 mm

Application

Function Principle

P/R

Fibre model

CF/RB3-20

Mechanical data

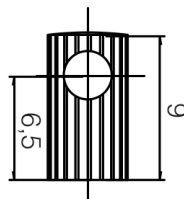
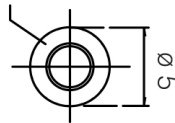
Ø optical fibre core

1

OTHERS

Dimensions

M 2,6



Datasensing S.r.l.

Strada S.Caterina, 235
41122 Modena (MO)
Tel. 059 420411
Fax 059 253973
E-mail
info@datasensing.com

**date of
printing**
13/06/2026
13:36:32