



FL

FLID/DT-0C

Photo,30m,PushPull-DO,Cable 90°,Receiver
“T-STYLE” HOUSING PHOTOELECTRIC SENSORS WITH
M18 OPTICAL HEAD FOR CAR WASHES

OVERVIEW



TECHNICAL FEATURES

Detection properties

Nominal sensing distance	30m
Sensitivity adjustment	No
Hysteresis	+/- 1%

Application

Function Principle	Receiver
Notes	(3m for car washes)
Emitter/Receiver	Receiver

Outputs	
Output type	Push-Pull DO
Output Function	DO
Response time	<12 ms

Electrical data	
Operating Voltage	19,2 ... 28,8VDC
Load current	≤30mA
LED indicators	Green (RUN) Yellow (status output) Red (problem with output)
Time delay before availability	≤200ms
Short-circuit protection	Yes
Reverse Polarity Protection	Yes
Impulsive Overvoltage Protection	Yes
Digital Resolution	12 bit

Mechanical data	
Weight	570 g (the pair)
Housing Material	PBT + PC
Connections	5m PVC cable
Active Head Material	PC
Tightening torque	1Nm

Operating temperature	-20..60°C (without freeze)
Storage temperature	-30..90°C (without freeze)

Test/Approvals

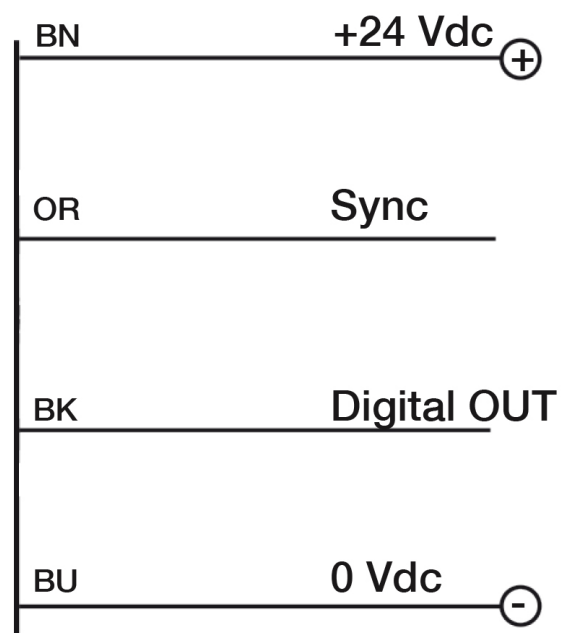
Approvals	CE
EMC compatibility	EN 60947-5-2
Degree of protection	IP67 (front-head IP69K)

Generical Data

Operating Temperature	- 20°C...+ 70°C (Without freeze)
Mechanical Protection	IP67 (front-head IP69K)

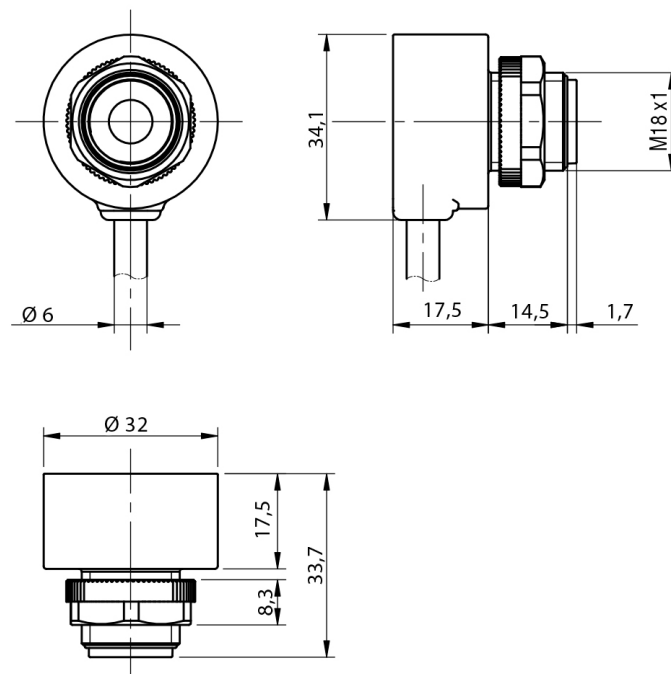
CONNECTIONS

Eletrical diagram

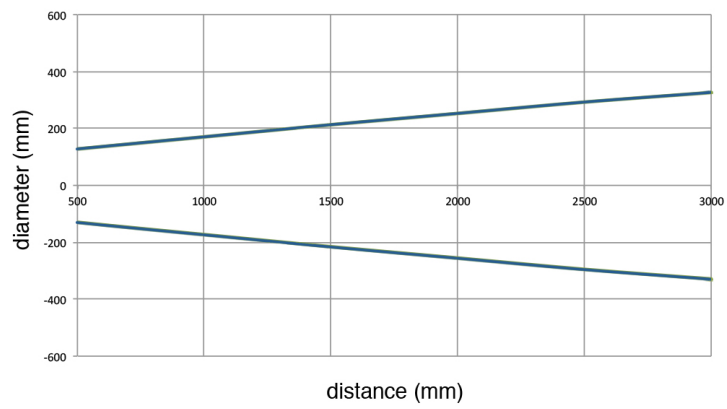


OTHERS

Dimensions



Response curves



**Datasensing
S.r.l.**

Strada S.Caterina, 235
41122 Modena (MO)
Tel. 059 420411
Fax 059 253973
E-mail
info@datasensing.com

**date of
printing**
16/07/2025
15:01:49