



CE

CE2/0P-1A

Cap.d20,PNP-NO+NC,Cable,Sch-STD
Ø 20 MM CYLINDRICAL CAPACITIVE SENSORS

OVERVIEW

- Models with or without self-monitoring
- Sensitivity adjustment with trimmer
- NO+NC complementary output
- Stainless steel housing
- IP65 protection degree
- Complete protection against electrical damages
- Axial cable exit or M12 plastic plug cable exit

CE

TECHNICAL FEATURES

Detection properties

Nominal sensing distance	1,5...10mm
Thermal drift of Sr	< 20%
Repeat Accuracy	5%
Sensitivity adjustment	Yes
Hysteresis	≤ 20%

Outputs

Output type	PNP with self monitoring
-------------	--------------------------

Output Function	NO + NC
-----------------	---------

Switching frequency	300Hz
---------------------	-------

Electrical data

Operating Voltage	10..30Vdc
-------------------	-----------

No-Load supply current	$\leq 17\text{mA}$
------------------------	--------------------

Load current	$\leq 100\text{mA}$
--------------	---------------------

Leakage current	$\leq 1\mu\text{A}$
-----------------	---------------------

Output voltage drop	1,5V - max. $I_L=100\text{mA}$
---------------------	--------------------------------

Max ripple content	$\leq 15\%$
--------------------	-------------

LED indicators	Yellow LED (object detected)
----------------	------------------------------

Time delay before availability	$\leq 200\text{ms}$
--------------------------------	---------------------

Short-circuit protection	Yes, autoreset
--------------------------	----------------

Reverse Polarity Protection	Yes
-----------------------------	-----

Impulsive Overvoltage Protection	Yes
----------------------------------	-----

Mechanical data

Dimensions	$\varnothing 20 / L = 80\text{mm}$
------------	------------------------------------

Mounting	Shielded
Housing material	AISI 303 Stainless Steel
Weight	200g
Connections	2m PVC cable
Active Head Material	LCP
Operating temperature	-25°C...+70°C
Diameter/Dimension	ø20

Test/Approvals

Approvals	CE cULus
EMC compatibility	IEC 60947-5-2
Shocks and vibrations	Vibration IEC 60068-2-6 / Shock IEC 60068-2-27
Degree of protection	IP65

Accessories

Supplied Accessories	screw driver
----------------------	--------------

Generical Data

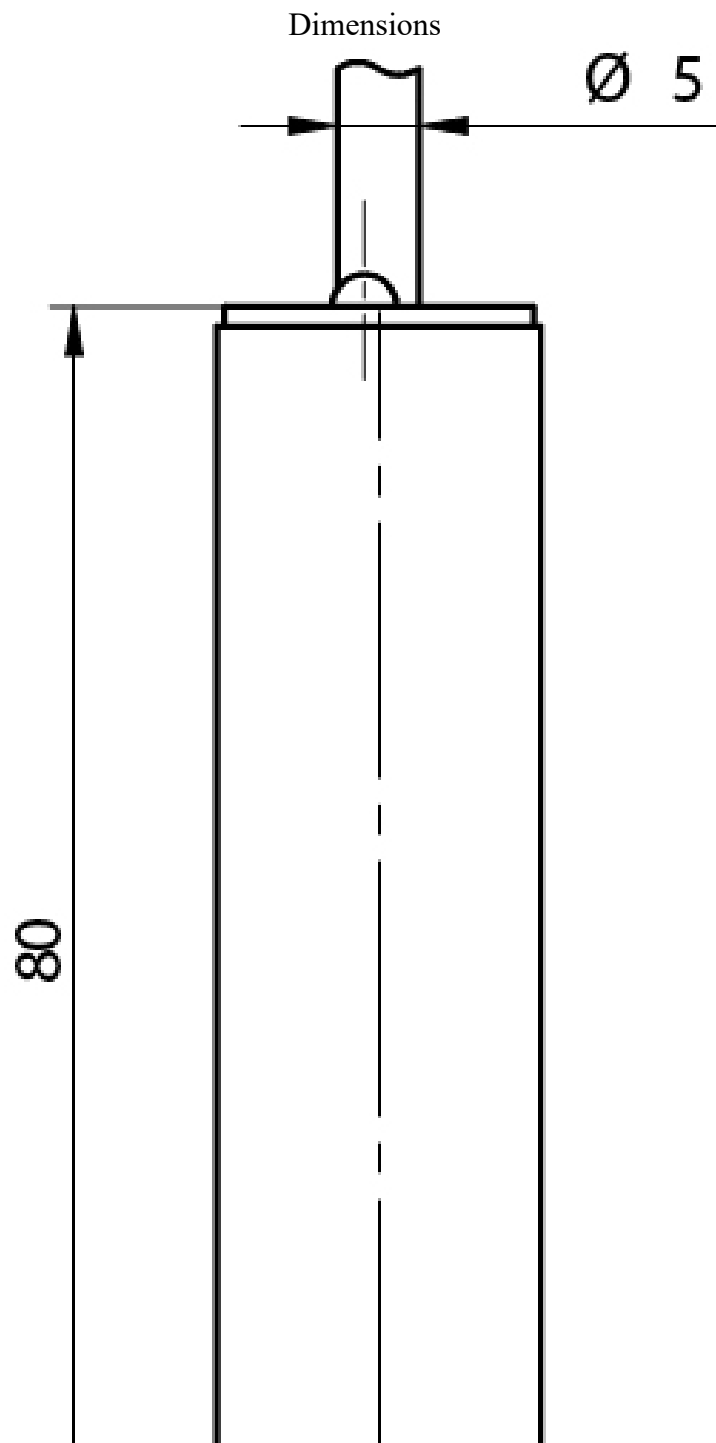
Dimensions	ø20 / L = 80mm
Operating Temperature	-25°C...+70°C (without freeze)
Mechanical Protection	IP65

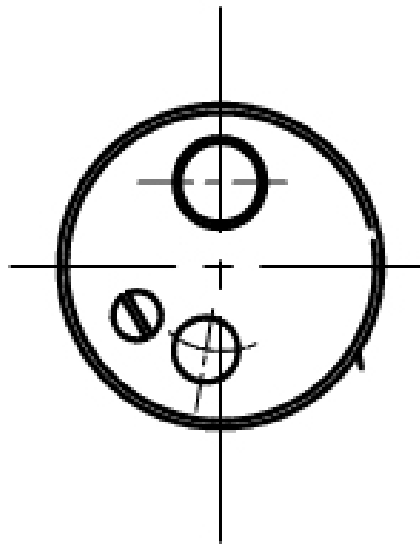
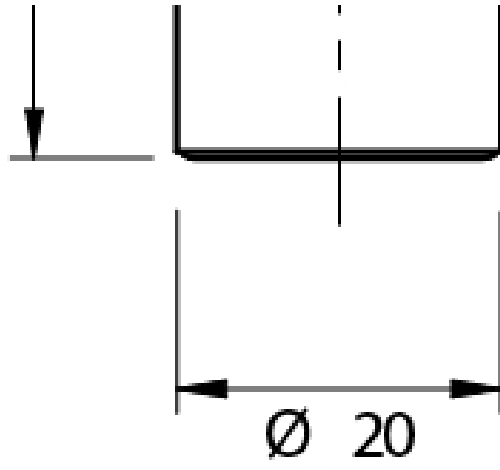
CONNECTIONS

Electrical diagram

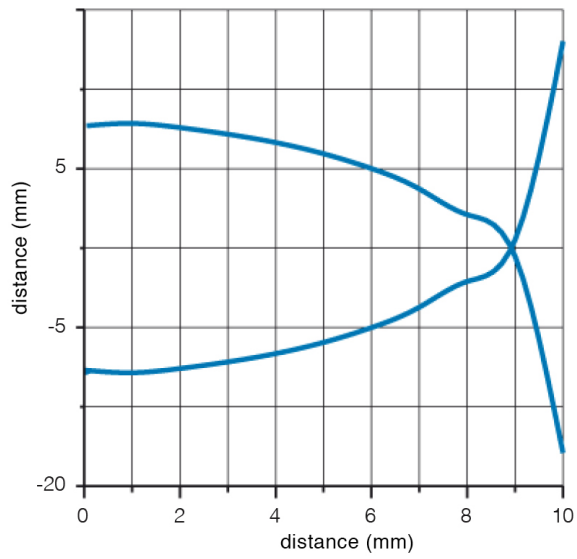
Image:

OTHERS





Response curves



**Datasensing
S.r.l.**

Strada S.Caterina, 235
41122 Modena (MO)
Tel. 059 420411
Fax 059 253973
E-mail
info@datasensing.com

**date of
printing**
19/06/2026
10:20:24