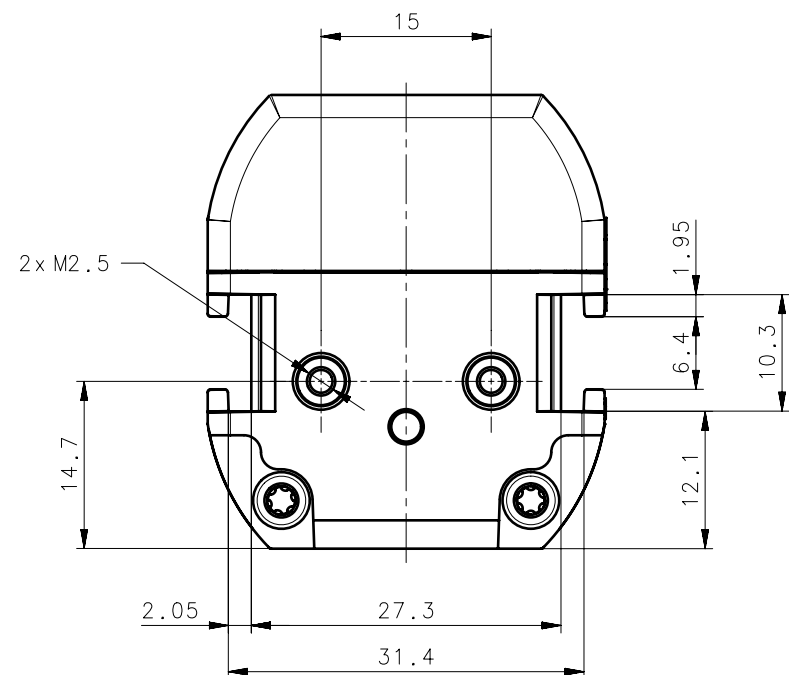
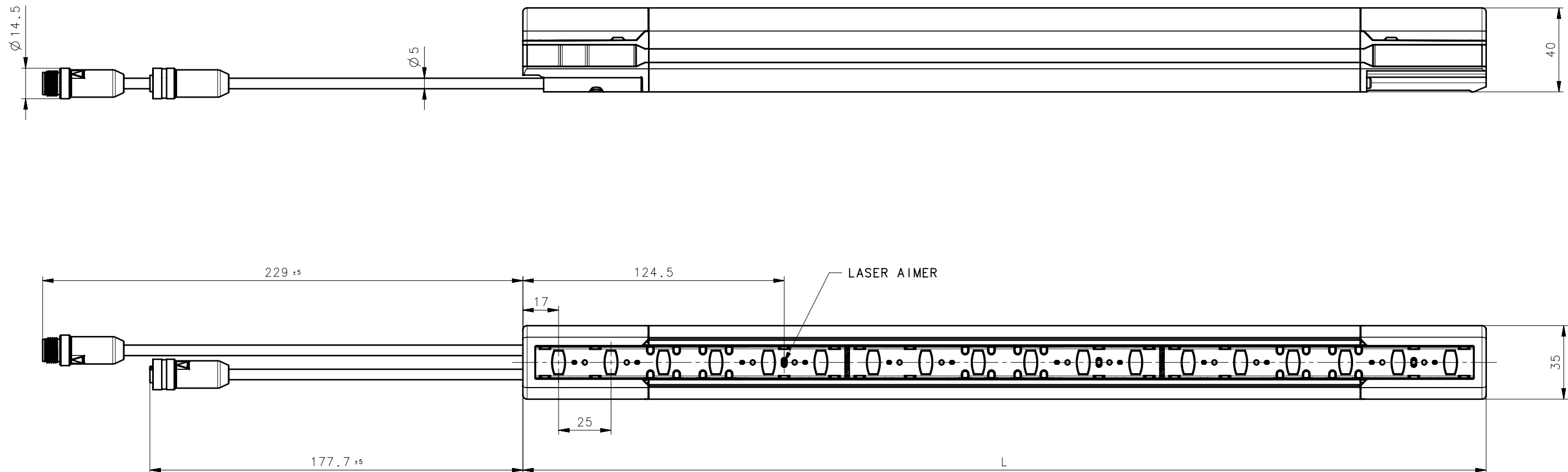
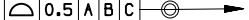



Model	L (mm)
SH4-30mm-300	309
SH4-30mm-450	459
SH4-30mm-600	609
SH4-30mm-750	759
SH4-30mm-900	909
SH4-30mm-1050	1059
SH4-30mm-1200	1209
SH4-30mm-1350	1359
SH4-30mm-1500	1509
SH4-30mm-1650	1659
SH4-30mm-1800	1809
SH4-30mm-1950	1959
SH4-30mm-2100	2109
SH4-30mm-2250	2259
SH4-30mm-2400	2409
SH4-30mm-2550	2559
SH4-30mm-2700	2709
SH4-30mm-2850	2859
SH4-30mm-3000	3009



VIEW A
(3:2)

MOD.	REV.	PROPOSAL	DESCRIPTION.	DATE	SIGN
<p>All materials employed have to be selected among RoHS compliant materials: the EC directives to be referred to are 2002/95/EC and correlated subsequent ones.</p>					
DATALOGIC WORKMANSHIP AND PACKAGING STANDARDS		<input checked="" type="checkbox"/> For Metal Parts last revision issued of GM_SSM_010_SPM. Unless otherwise specified, surfaces shall be category "C" <input checked="" type="checkbox"/> For Plastic, Rubber and Overmold Parts last revision issued of GM_SSM_004_SPP. Unless otherwise specified, surfaces shall be category "C" <input checked="" type="checkbox"/> For Package last revision issued of GM_SSM_002_SPS and GM_SSM_007_SPI. <input checked="" type="checkbox"/> Not applicables			
LATEST REVISION OF DATALOGIC STANDARDS MUST BE VERIFIED AT: HTTP://WWW.DATALOGIC.COM/TERMS_CONDITIONS . ALL DIMENSIONS AND REQUIRED SPECIFICATIONS REFER TO THE FINISHED PART AS IT WILL BE RECEIVED AND MEASURED BY DATALOGIC.			NOTE		
DIMENSIONS WITHOUT TOLERANCE ACC. TO: ISO 20457 - TG4 UNSPECIFIED DIMENSIONS ACCORDING TO ISO 22081  RADII: ± 0.1 TEDS ACCORDING TO 3D CAD MODEL			TREAT.		SCALE 1:2
			MATER.		
DES. BY D. Fioretti			DATE 03/01/2022		APPROVED BY (IF REQUIRED)
			NAME SH4-30mm		MOLD N°
					CODE
					DWG N°
					REV. A